

Intelligent Fusion Technology, Inc.

Engineering & Technology for
America's Warfighters

**MORE INFORMATION
MORE ACCURACY**

Areas of Expertise

RF spectrum monitoring & anomaly detection

Sensor data fusion & processing

SATCOM & SATNAV

Target tracking & pattern analysis

ML/AI & data analytics

Cybersecurity

Unmanned & autonomous system

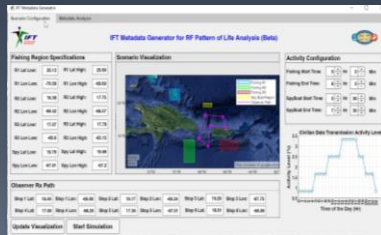
Radar & mmWave

GUI and simulation platform



PoLICE

IFT's Pattern of Life Integrated Classification Engine (PoLICE) for RF Situational Awareness



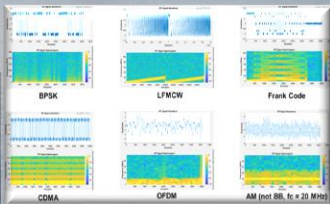
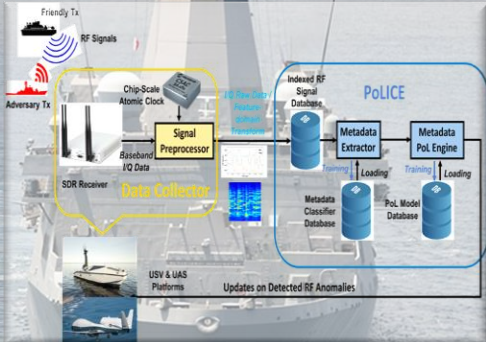
Intelligent Fusion Technology, Inc. has developed the PoLICE system to monitor the frequency bands of interest and perform a pattern analysis on intercepted RF signals. PoLICE can extract key metadata features from raw I/Q samples and perform pattern analysis on metadata records using state-of-the-art ML/AI algorithms. Thereby, establishing a pattern-of-life for “normal behavior/scenario” and detecting RF anomalies caused by a change in underlying scenario/activity.



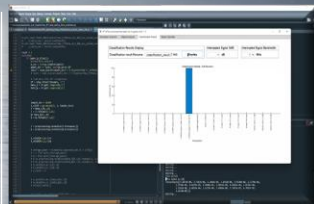
Intelligent Fusion Technology, Inc.



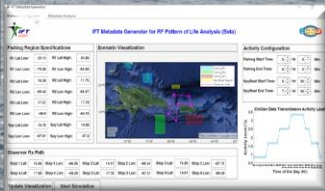
IFT's Pattern of Life Integrated Classification Engine (PoLICE) for RF Situational Awareness



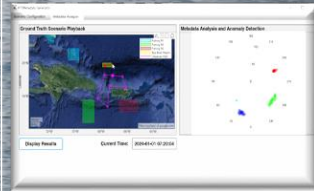
IFT RF I/Q Signal Simulator



IFT RF Modulation Classifier



IFT RF Metadata Generator



IFT Metadata Analyzer

PoLICE

